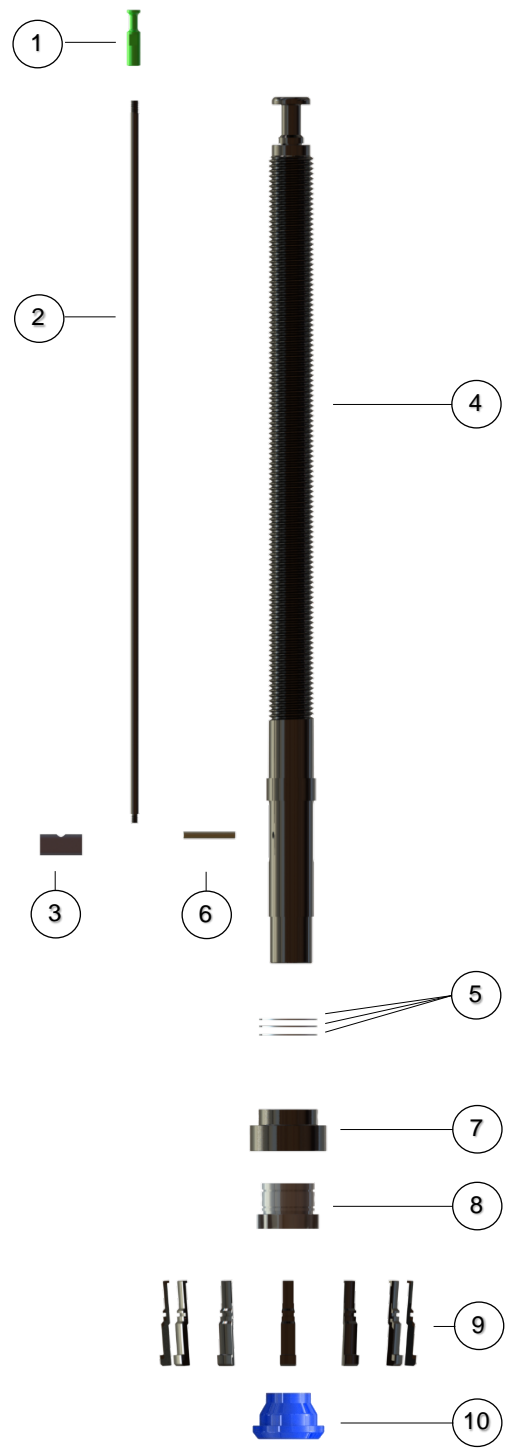


Acumen Quick Release Valve Seat Puller Gen 4 Series 5 Weir SPM 2.0 Parts List

Item	Part Number	Description
1-10	AC-HP450A-2.0	4.5" Weir SPM 2.0 Acumen Quick Release Valve Seat Puller Assembly 36" All Thread
1-10	AC-HP450A-32-2.0	4.5" Weir SPM 2.0 Acumen Quick Release Valve Seat Puller Assembly 32" All Thread
1-10	AC-HP450A-42-2.0	4.5" Weir SPM 2.0 Acumen Quick Release Valve Seat Puller Assembly 42" All Thread
5-10	AC-H450A-2.0	4.5" Weir SPM 2.0 Puller Head and Bottom Nose Assembly
1-4	AC-232A	2" X 32" All Thread Assembly
1-4	AC-236A	2" X 36" All Thread Assembly
1-4	AC-242A	2" X 42" All Thread Assembly
1-3	AC-PRK232A	32" Pull Rod Assembly
1-3	AC-PRK236A	36" Pull Rod Assembly
1-3	AC-PRK242A	42" Pull Rod Assembly
1	**	Pull Button
2	**	Pull Rod
3	AC-CB200	Cross Bar Connector
4	**	All Thread
5	AC-SRO4&5A	Snap Ring and O-Ring Assembly
6	AC-CP4&5	Cross Pin
7	AC-OC4&5-PT	Pass Through, Outer Collar
7a Opt.	AC-OC4&5	Outer Collar
8	AC-IH4&5	Inner Housing
9	AC-J450-2.0	Weir SPM 2.0 Series 5 Jaws, Replacement Set (12 Jaws)
10	AC-BN450-2.0	Weir SPM 2.0 Series 5 Bottom Nose, Blue



**Available with assembly only

 **MADE IN USA**
Patented