

Novatech™ Full Open Drilling Valve and Seat



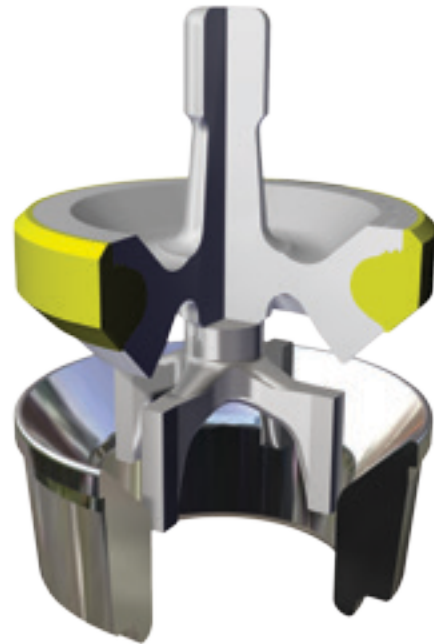
 MADE IN USA

Full Open Valve Design

- Streamlined guide legs
- Hemispherical dome stores fluid energy
- Smoother flow and pump operation
- Operating pressure rated at 7500 psi
- Maximum bearing area reduces metal wear
- Unique inertia-welded one-piece valve body combines advantages of a forging for strength with advantages of a casting for smooth streamlined flow

Cast-N-Place™ Insert

- Assures perfectly round inserts for quick sealing in all environments
- Serrations in valve insert groove lock insert in place, reduces insert swelling and movement
- Casting Insert directly onto valve body eliminates insert residual molding stress
- Longer insert life
- Serves to eliminate premature insert seal failures
- Inserts for all applications
- High pressure – High temperature Inserts



Full Open Seat Design

- Largest metal-to-metal bearing area in industry extends valve seat life
- Provides uniform fluid end loading
- Reduces fluid end stress
- Reduces seat taper wear
- Serves to eliminate washouts
- Heavy-duty puller head